

# Glaucoma

INFORMATION SHEET

## What is glaucoma?

Glaucoma is a term we use to describe conditions associated with increased pressure in the eye.

## Why does it occur?

There are several reasons for the development of glaucoma. In general glaucoma is caused by imbalances between fluid production and drainage in the eye. We try to differentiate primary glaucoma from secondary glaucoma. Primary glaucoma is typically caused by genetic factors/developmental factors. Secondary glaucoma is caused by other underlying conditions such as chronic inflammation in the eye (uveitis), an intraocular mass or displacement of the lens, just to list a few.

## Can both eyes be affected?

Yes, especially in cases of primary glaucoma, we expect both eyes to be involved but usually there is a time delay between the onset of disease in both eyes.

## Are any breeds predisposed?

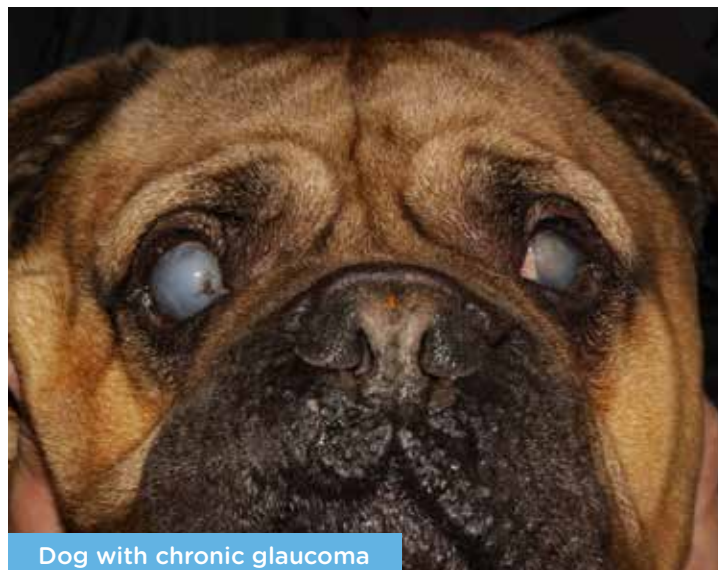
Secondary glaucoma can affect any breed of dog or cat. In cases of primary glaucoma, there is a predisposition in certain breeds (including the American Cocker Spaniel, English Cocker Spaniel, English Springer Spaniel, Basset Hound, Shar Pei, Chow Chow).

## What treatment options do I have?

Treatment options in the early stages of glaucoma involve various eye-drops to reduce the production of fluid in the eye or open up the fluid drainage pathways. However, in most cases medical treatment ultimately fails. Therefore various surgical methods have been employed to control normal pressure in the eye. Surgical methods aim to destroy the fluid producing structures in the eye and bypass the outflow pathways. However despite best efforts to optimize medical and surgical treatments for glaucoma, the long term prognosis for vision remains guarded.

## What happens if I do nothing?

If left untreated, both primary and secondary glaucoma will ultimately result in permanent loss of vision and possibly loss of the eye. We know that glaucoma can cause severe migraines and headaches in humans, it is likely to be similar in animals.



Dog with chronic glaucoma



Close up glaucoma eye

## Want to know more?

If you have any further questions regarding this or any other condition feel free to ask us during the consultation, or contact us:

T 01924 908333 E [referrals@paragonreferrals.co.uk](mailto:referrals@paragonreferrals.co.uk)

Paragon Veterinary Referrals, Paragon Business Village,  
Red Hall Crescent, Wakefield WF1 2DF  
T 01924 908333 W [paragonreferrals.co.uk](http://paragonreferrals.co.uk)

f [#paragonveterinaryreferrals](https://www.facebook.com/paragonveterinaryreferrals)

Committed to excellence

